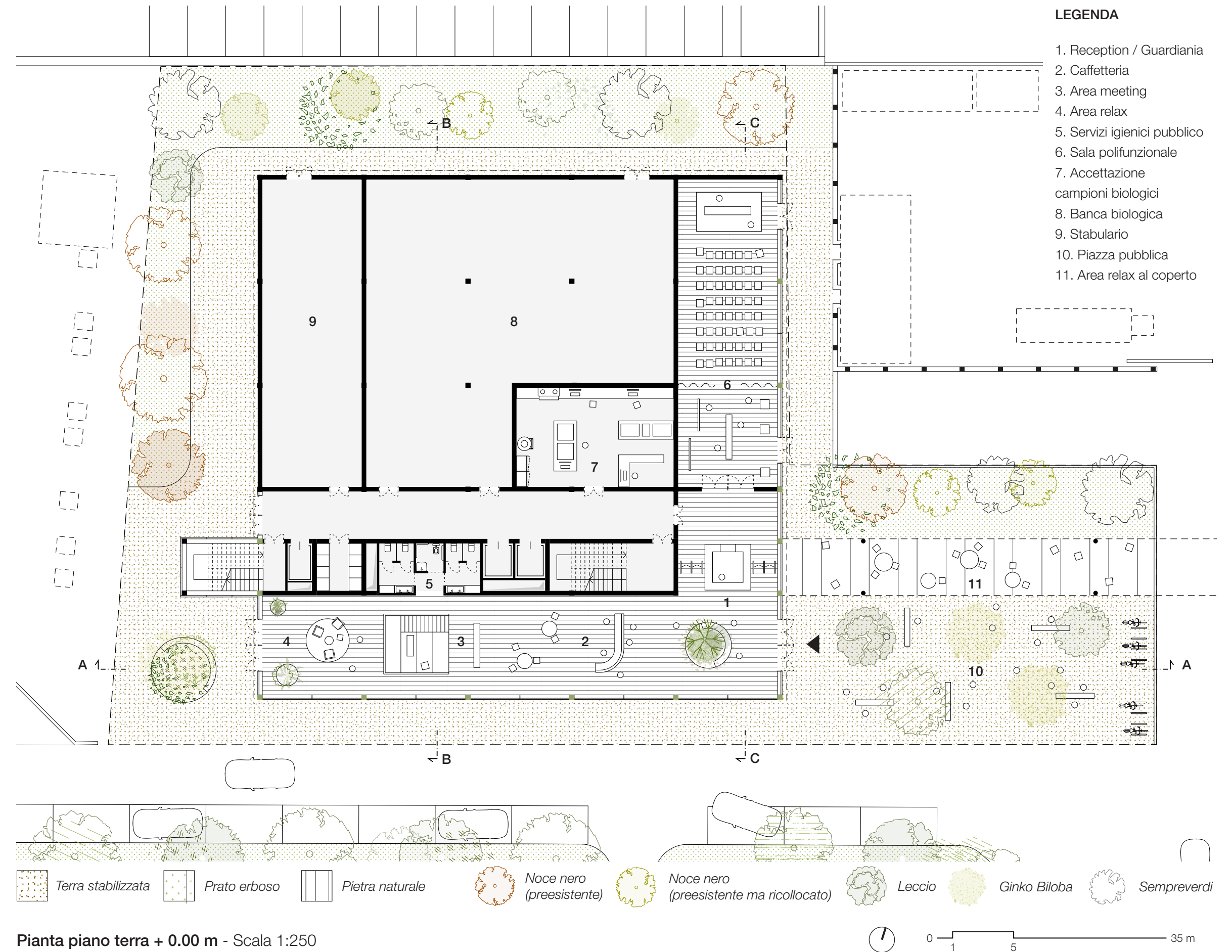
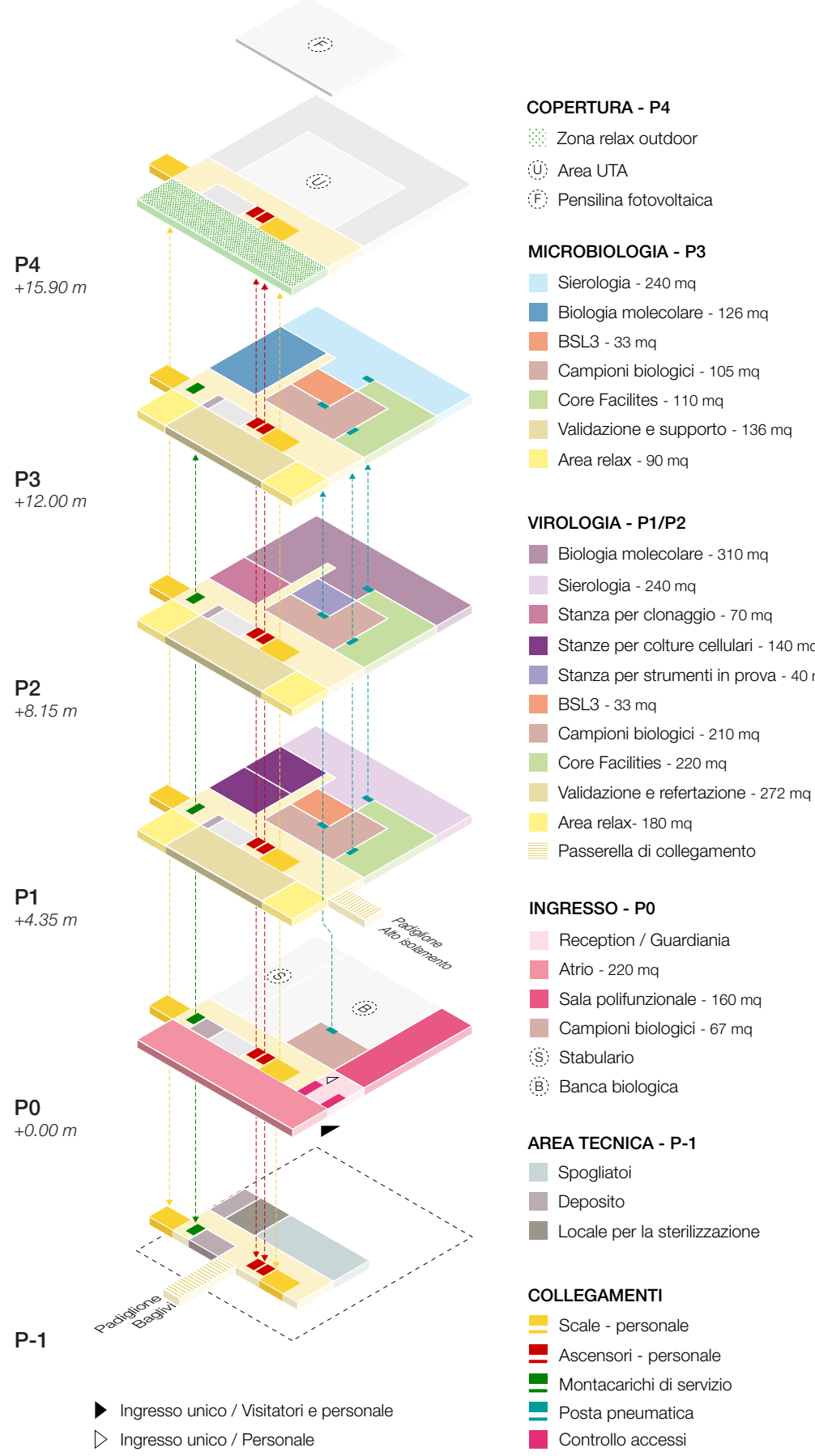




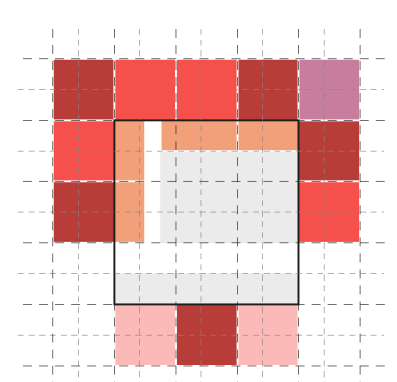
## PROGRAMMA FUNZIONALE



## FLESSIBILITÀ E ADATTABILITÀ DELLO SPAZIO INTERNO

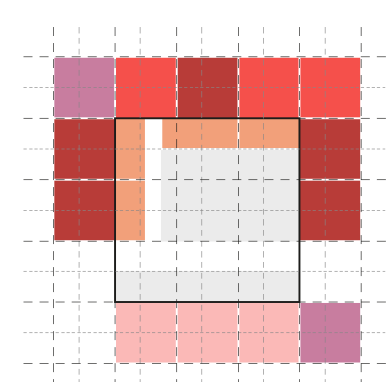
### MODULARITÀ DELL'ANELLO DEI LABORATORI

#### Configurazione A



- Modulo base 6.80 x 6.80 m = 46 mq
- Banco da lavoro per piccole strumentazioni
- Macchinari (Core Lab Equipment)
- Postazioni per referenziazione e validazione
- Macchinari speciali e cappe di sicurezza (flusso laminare e non)

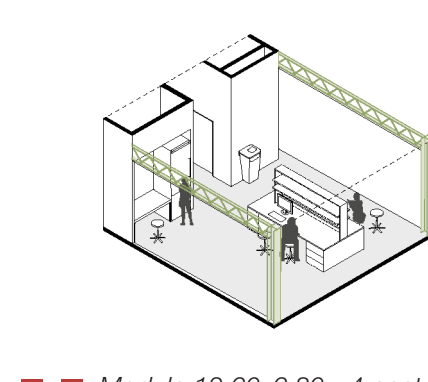
#### Configurazione B



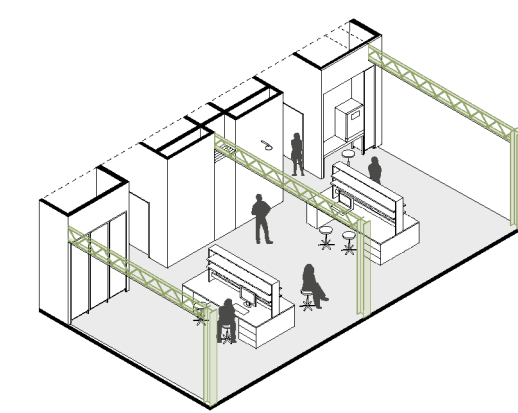
- Meeting box
- Aree a destinazione specifica
- Technical Core

### TIPOLOGIE DI OPEN LABS

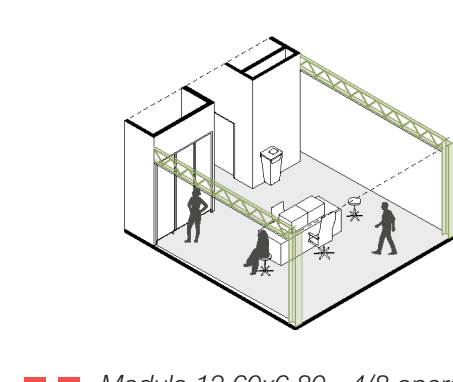
#### Modulo 6.80x6.80 - 2 postazioni



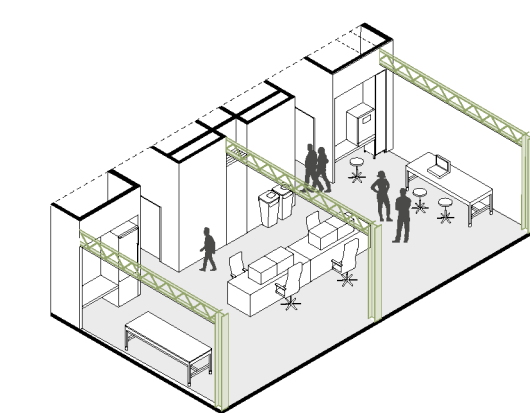
#### Modulo 13.60x6.80 - 4 postazioni



#### Modulo 6.80x6.80 - 2/4 operatori

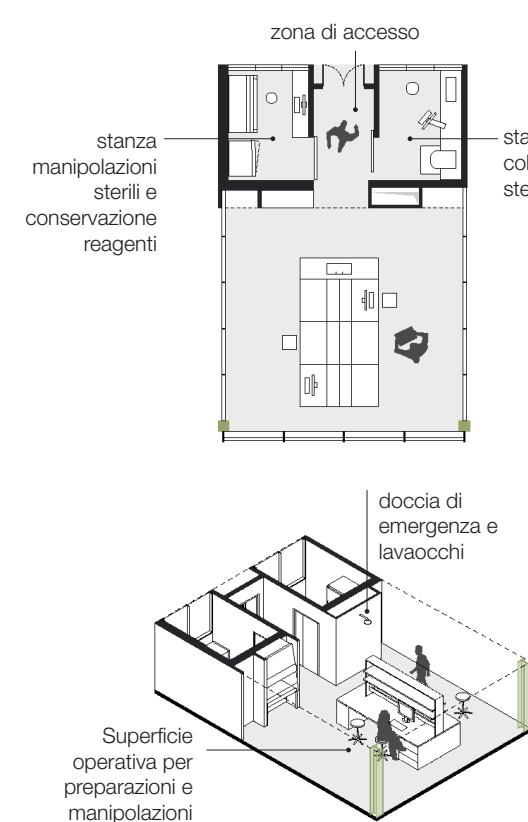


#### Modulo 13.60x6.80 - 4/8 operatori

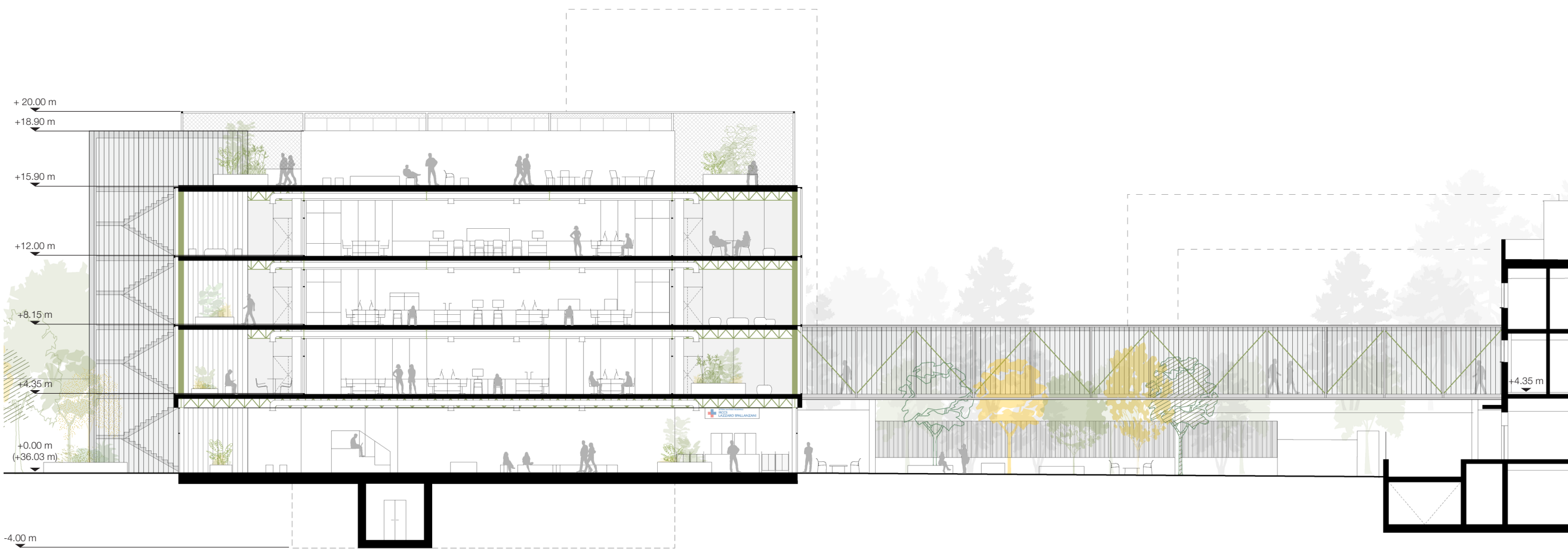
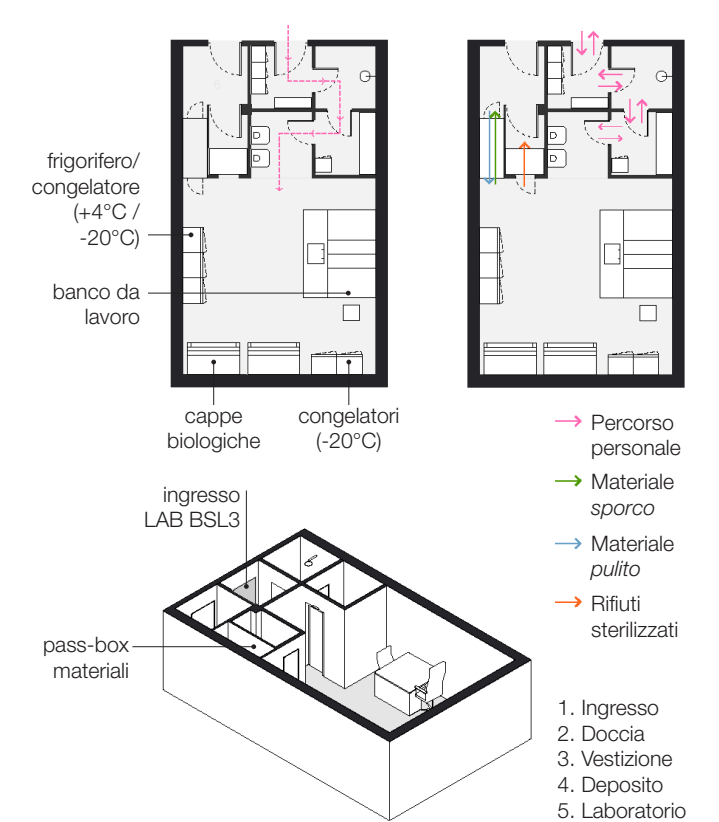


### LABORATORI SPECIALIZZATI

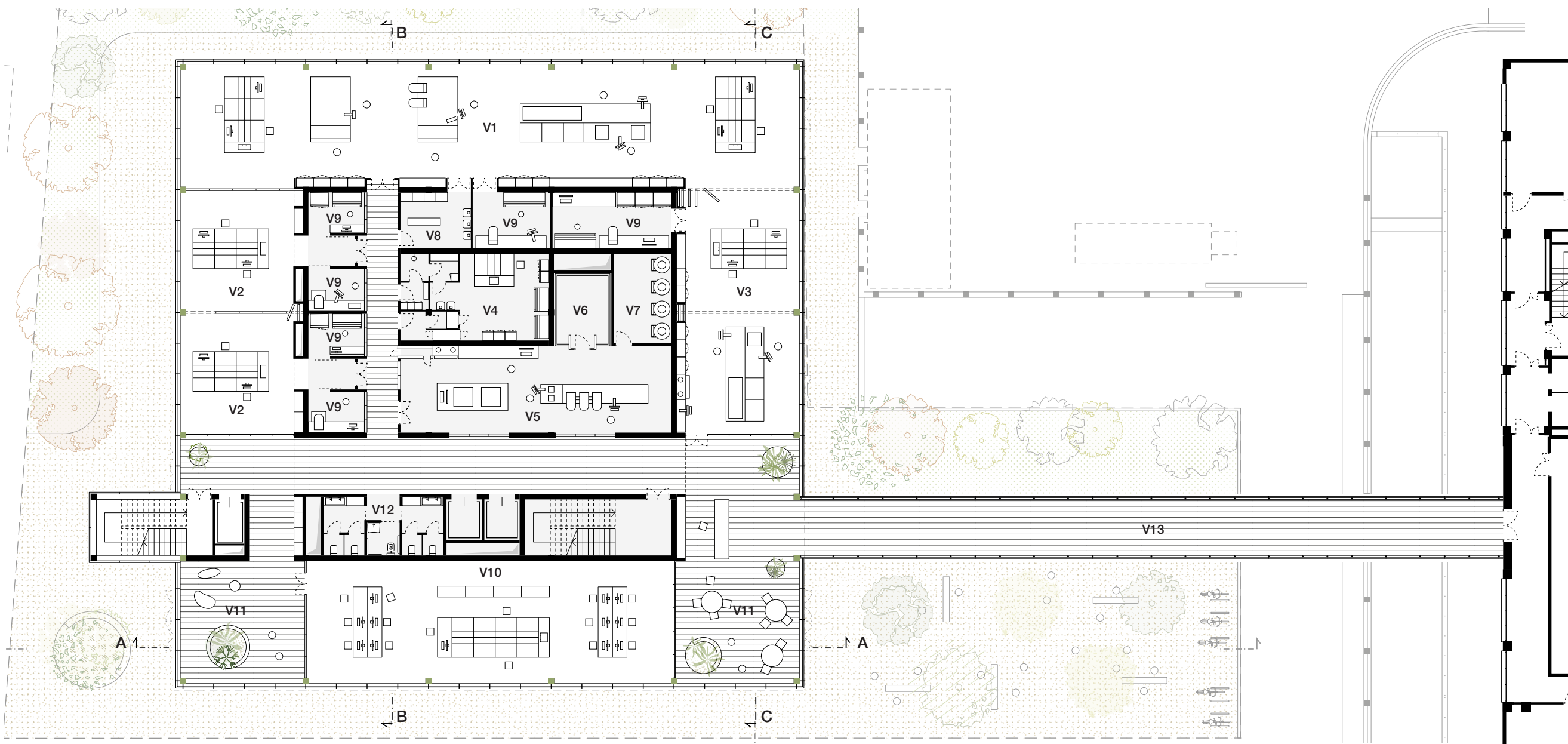
#### Culture cellulari (70 mq)



#### Laboratorio BSL3 (33 mq)



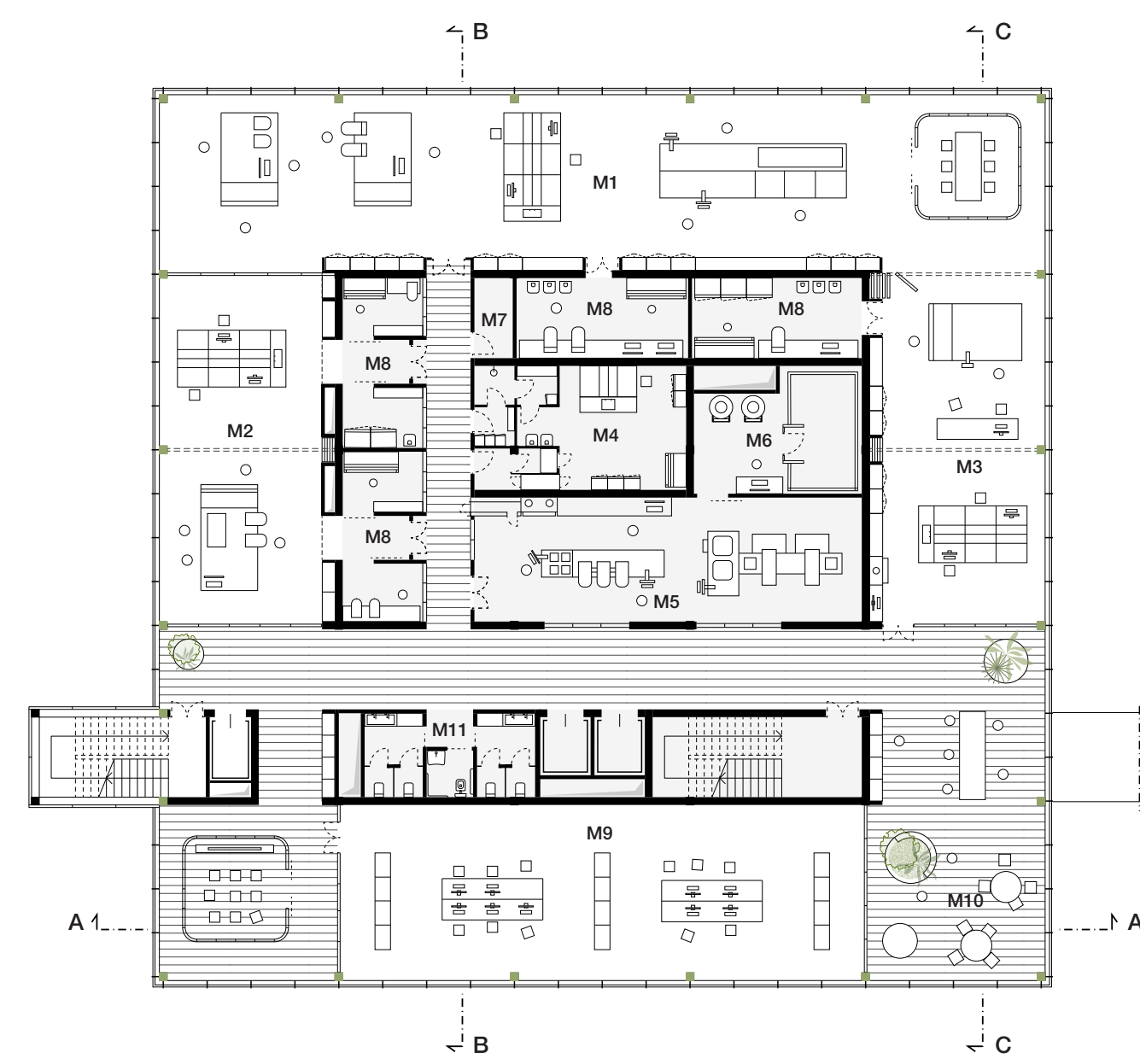
Sezione AA - Scala 1:250



VIROLOGIA / Pianta P1 + 4.35 m - Scala 1:250



VIROLOGIA / Pianta P2 + 8.15 m - Scala 1:250



MICROBIOLOGIA / Pianta P3 + 12.00 m - Scala 1:250

## LEGENDA

### V - VIROLOGIA

1. Open labs - Sierologia
2. Stanza per colture cellulari
3. Open labs - Core Facilities
4. Laboratorio BSL3
5. Campioni biologici
6. Camera fredda
7. Stanza congelatori
8. Deposito sporco
9. Stanze per strumentazioni a supporto
10. Validazione / referenziazione / supporto
11. Area relax e meetings
12. Servizi igienici personale
13. Collegamento con padiglione AI
14. Open labs - Biologia molecolare
15. Stanza per clonaggio
16. Stanza per strumentazioni in prova

### M - MICROBIOLOGIA

1. Open labs - Sierologia
2. Open labs - Biologia molecolare
3. Open labs - Core Facilities
4. Laboratorio BSL3
5. Campioni biologici
6. Camera fredda
7. Deposito
8. Stanze per strumentazioni a supporto
9. Validazione / referenziazione / supporto
10. Area relax e meetings
11. Servizi igienici personale