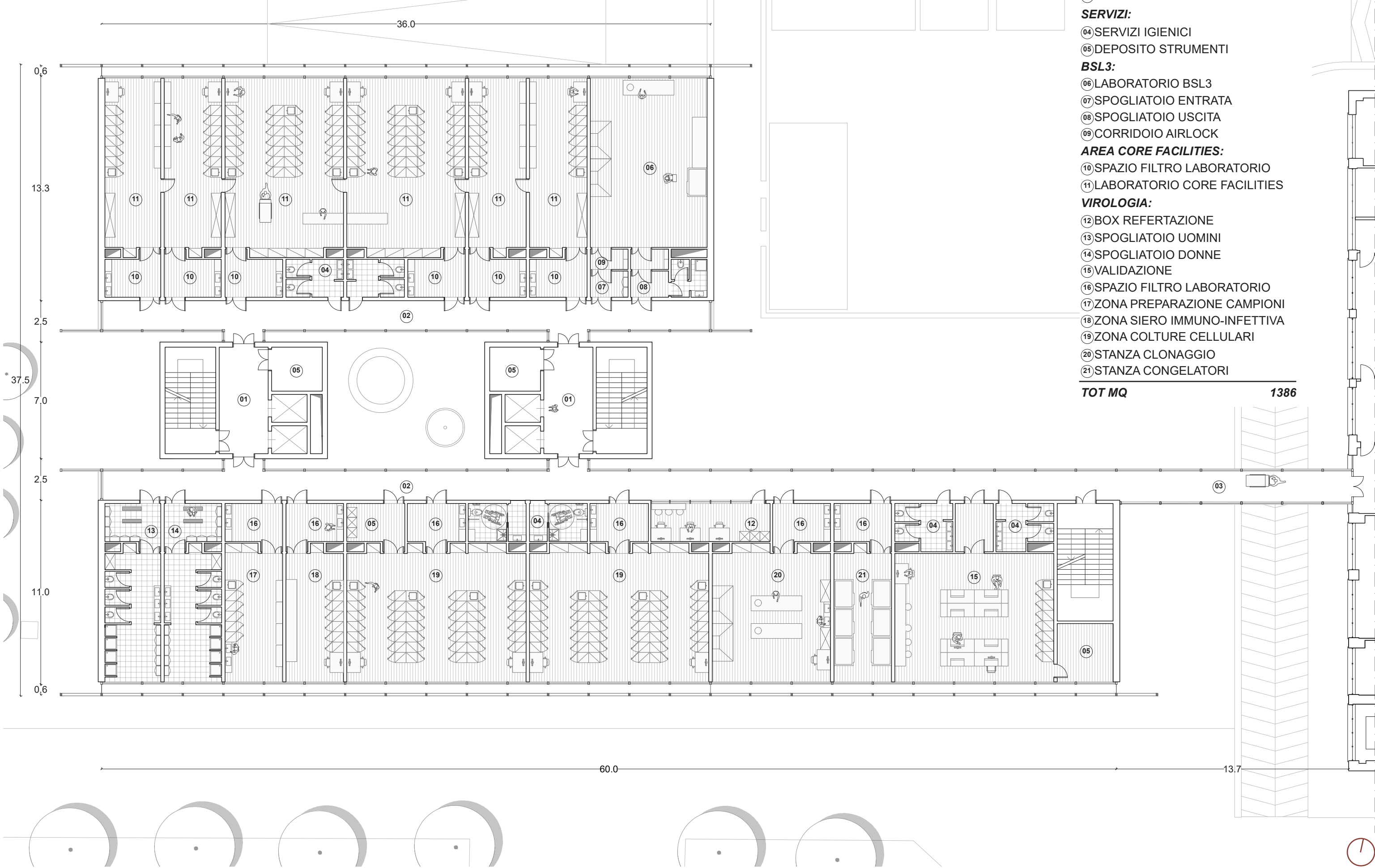
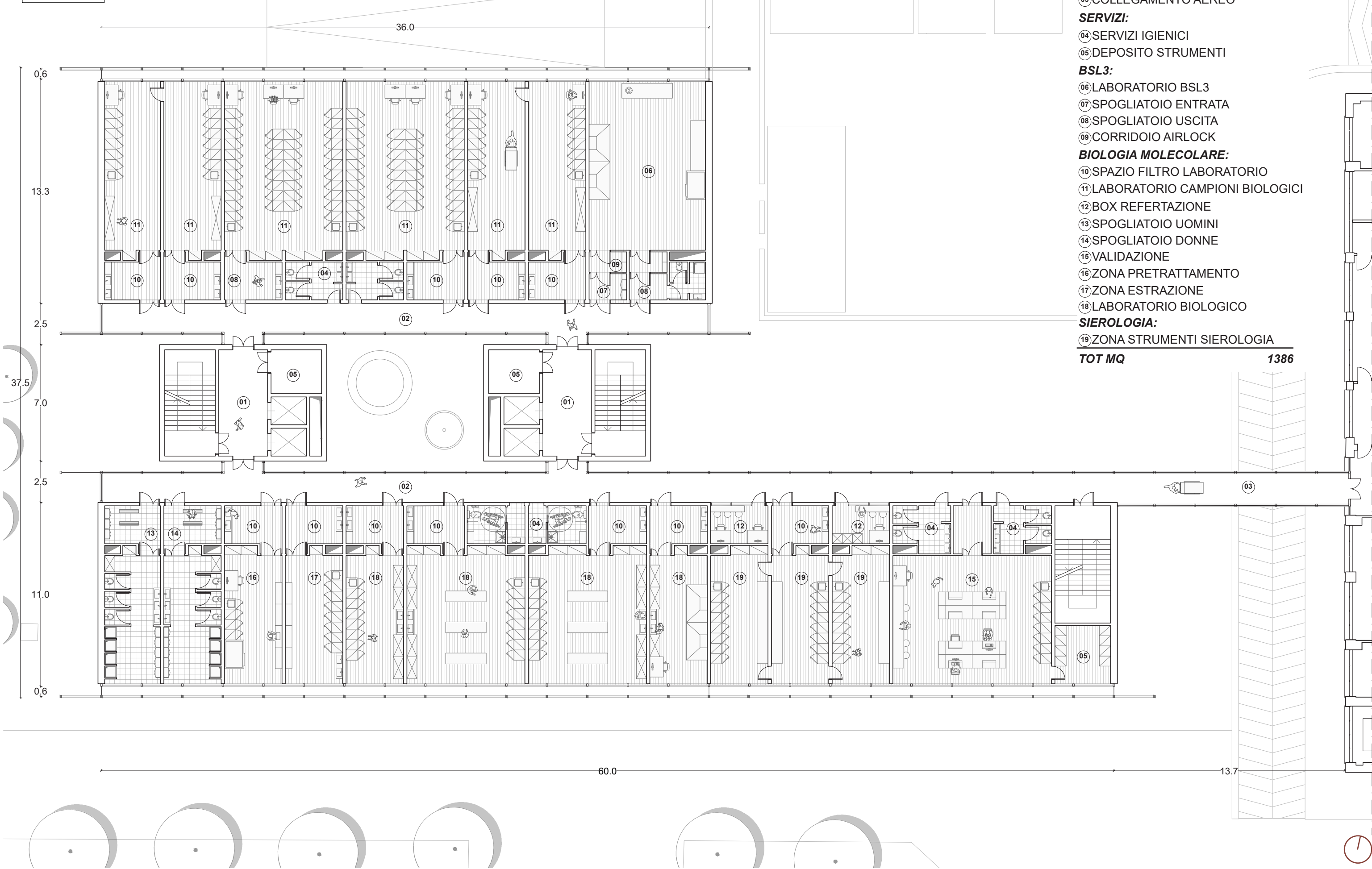


### PIANTA PIANO



### ESPLOSO IMPIANTISTICO

This diagram illustrates the 'Exploded View of the Technical Installation' (Esplosione impiantistica) of a building. It shows the spatial arrangement of various technical elements relative to the building's structure. The components labeled include:

- VANI TECNICI** (Technical Rooms): Indicated by a gear icon, showing the locations of mechanical and electrical rooms.
- PANNELLI FOTOVOLTAICI** (Photovoltaic Panels): Indicated by a sun icon, showing the placement of solar panels on the roof and facade.
- IMPIANTI** (Installations): Indicated by a flame icon, showing the locations of heating, ventilation, and air conditioning (HVAC) units.
- FACCIATA** (Facade): Indicated by a grid icon, showing the facade's role in the technical system.
- CONNESSIONE** (Connection): Indicated by a person icon, showing the connection point to the external network.

Blue arrows indicate the flow of air or energy between the building's interior and the technical components, while dashed lines show the spatial relationships and connections between the various elements.

**DETTAGLIO**

+15.20m  
+12.00 m  
+8.00 m  
+4.00 m  
+0.00 m

01  
02  
03  
04  
05  
06  
07  
08

6.0  
4.0  
4.0  
3.0

0.8  
2.4

**LEGENDA**

- 01 CAVEDIO IMPIANTISTICO
- 02 FOTOVOLTAICO
- 03 LOCALE TECNICO
- 04 FACCIAIA VENTILATA
- 05 GRIGLIA DI ESTRAZIONE
- 06 PASSERELLA
- 07 CONTROSOFFITTO
- 08 PAVIMENTO GALLEGGIANTE

0 m 1 m 2 m 4 m

This architectural rendering depicts a modern building with a prominent white, angular volume and a large glass facade. The building is situated in a landscaped area with green grass, trees, and a paved walkway. Several people are shown walking on the path, providing a sense of scale. The sky is blue with scattered clouds.